

Two sided printed is required

Print on thick (1/3mm) paper

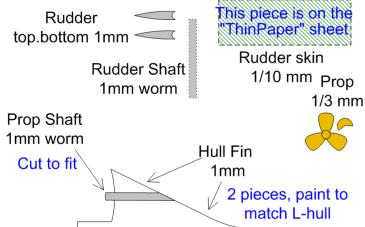
This is the image for the
FRONT side

inchXcm

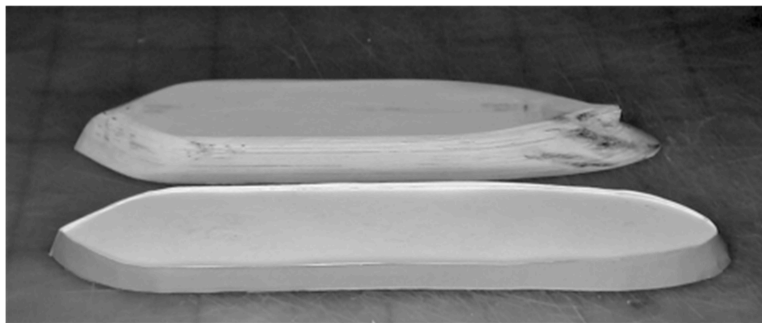
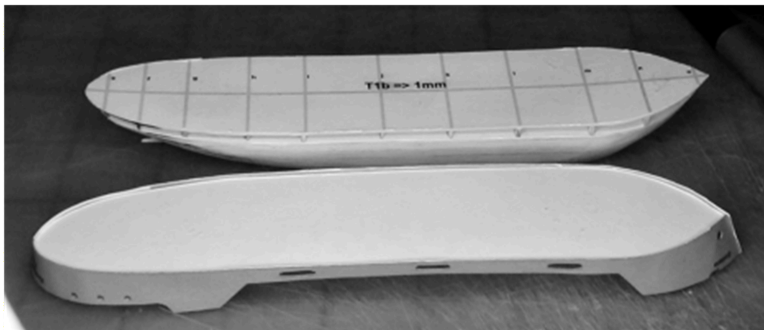
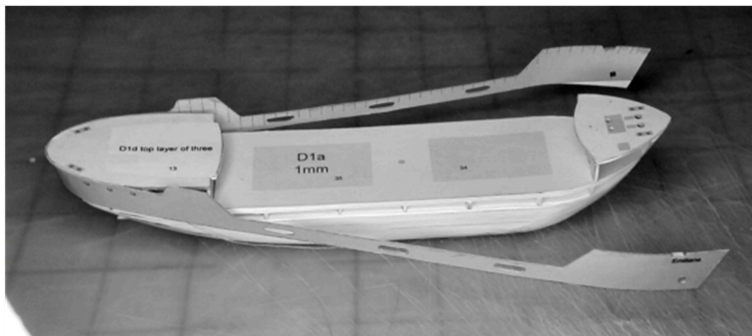
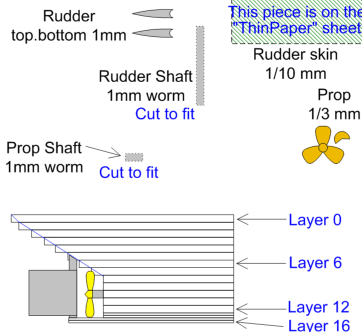
Front-To-Back registration based on the
sheets being printed in the center of the page.

T2 Hull Sides for the Middle Hull Section

Rudder prop pieces (for L-Hull)



Rudder prop pieces (for M-Hull)



Reverse side
registration
pinhole
+

Bend in 90 deg.

Don't forget
the holes!

D3 Hull Sides for the Upper Hull Section

D2 Hull Sides for the Upper Hull Section

Emiliana
Reyk

Torini
javik